

# Lego Moving Robot

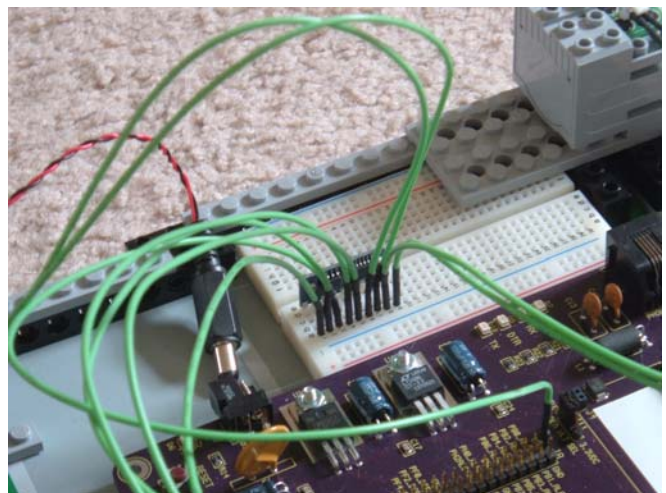
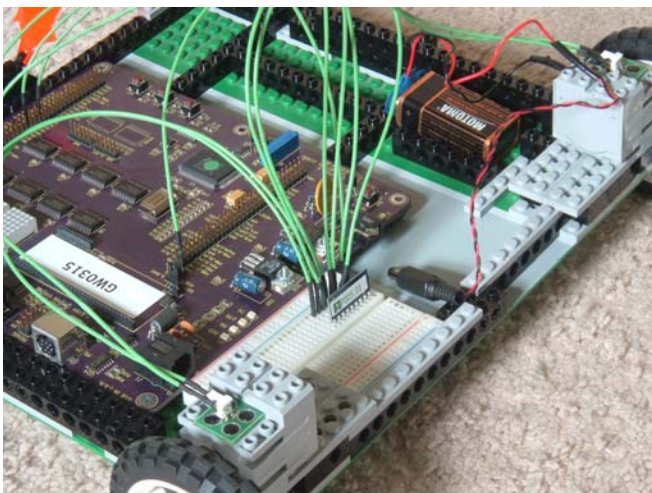
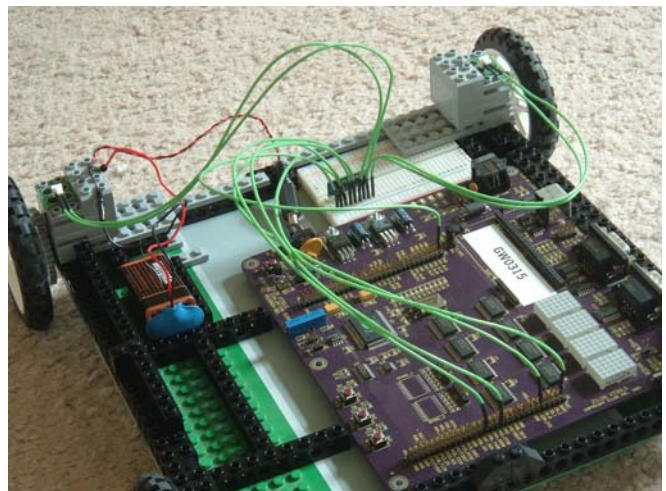
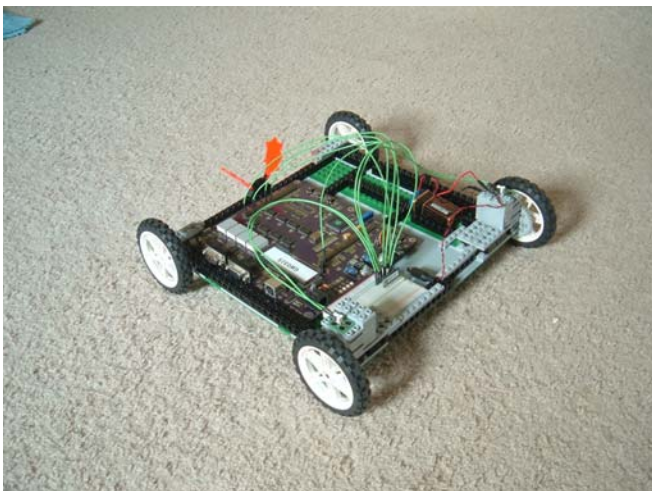
Real-Time Embedded System, George Washington University, Spring 2007

24 April 2007

Sue Vargo, [thanyen87@comcast.net](mailto:thanyen87@comcast.net)

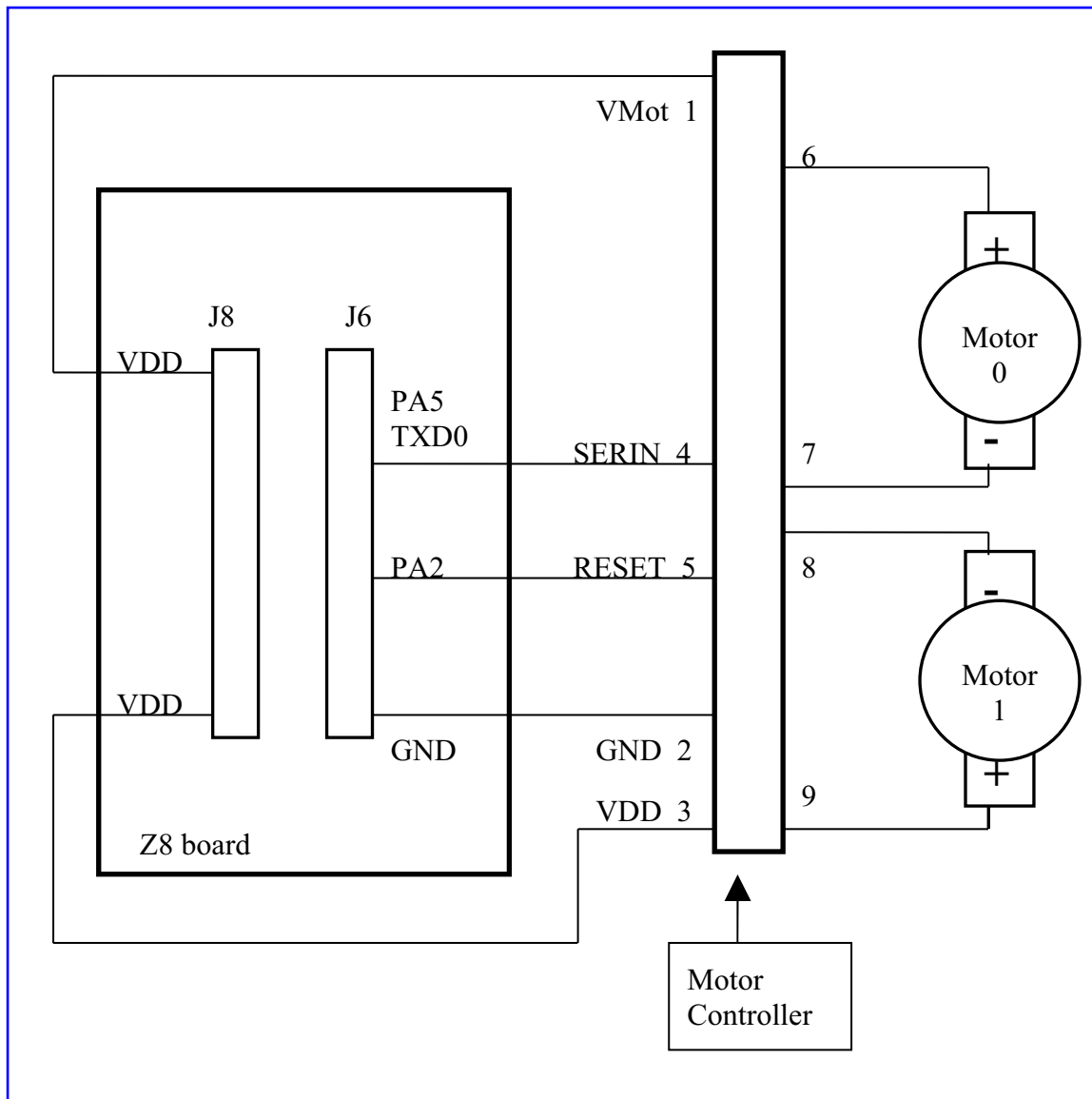
## ***Project Abstract***

This Lego-build moving robot uses a Z8 Zilog micro controller board to control the movements of the motors for the robot. The Z8 board uses a Pololu dual serial motor controller to communicate with the robot's motor via a serial line. Using the Z8 micro controller board will give the robot more diverse movements than the Lego's RCX brick.



## Work in progress. Schematic/Diagram

This is a schematic diagram of this particular robot. There can also be sensors and bumpers added to the robot to allow it to perform some functions. For example, a type of flip switch can be added so that if the robot hits an object, it can stop, turn around and move in a different direction.



## Lessons Learned

- ☉ Default values are not always good.
- ☉ The Zilog IDE compiler is not as robust as a regular C compiler
- ☉ Trust that you are doing the right thing ... it must be the hardware acting up ...