

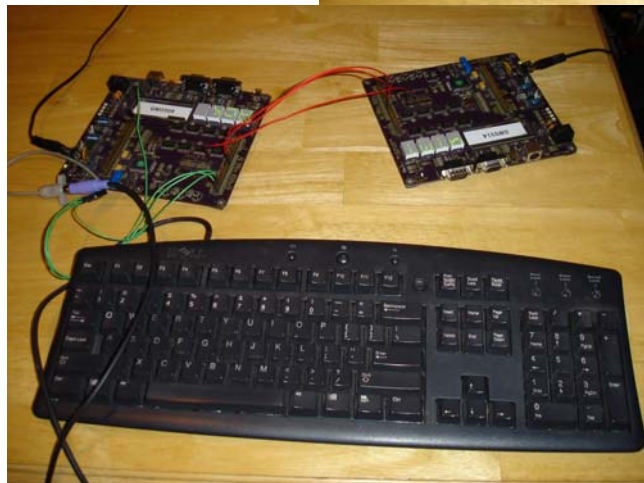
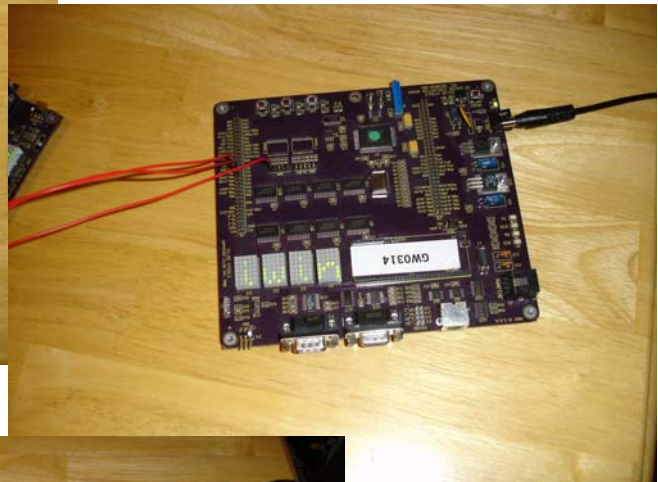
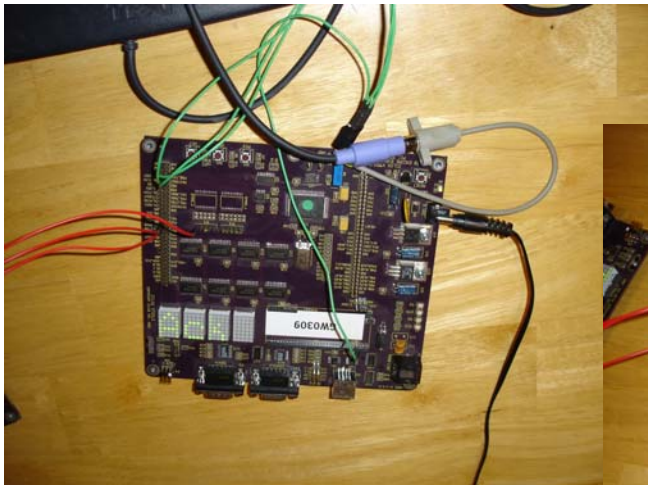
# Encrypted Wireless Communicator

Real-Time Embedded Systems, George Washington University, Spring 2008  
Brian Chan, bobes@gwu.edu

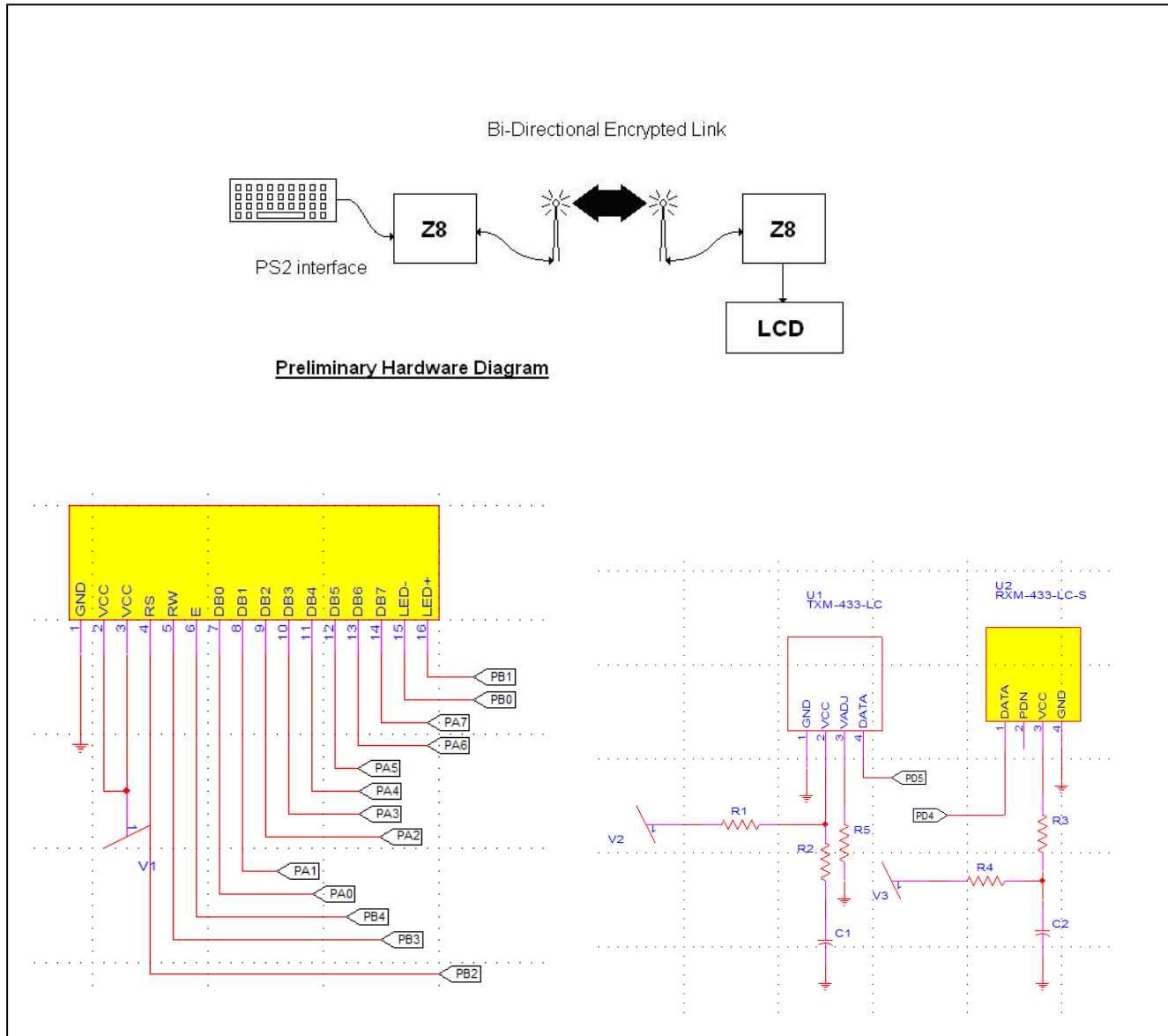
## ***Project Abstract***

The Encrypted Wireless Communicator is a device that takes input from a keyboard, encrypts and sends the data out over a wireless link. The proof of concept version will consist of two devices. One will take the input from a PS2 keyboard, encrypt the data and send it over a wireless RF link. The second device will read the data on the RF link, decrypt and display the message on an LCD screen. In the end, the screen and RF link were abandoned. The communicator transmits over RS232 and displays on the LED array.

## ***Final Project***



## Work in progress.Schematic/Diagram



### Lesson Learned

- Keyboard Interface
- Time Management
- RS232 Protocol
- AES Encryption Algorithm